



PONTOON ENCLOSURES

Install Guide
WP.PE.01

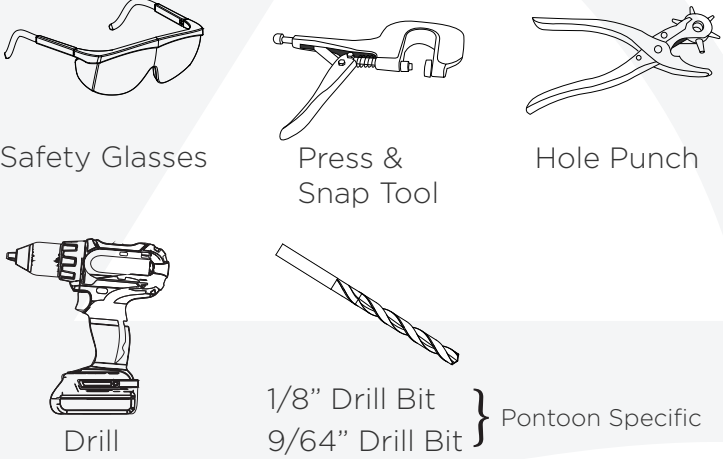
NOTE

The pontoon bimini frame should be installed prior to beginning any enclosure installation. Full enclosures require both bimini frames to be mounted and installed accordingly. Enclosures are not suitable for trailering or winter storage.

HARDWARE REQUIRED



TOOLS REQUIRED

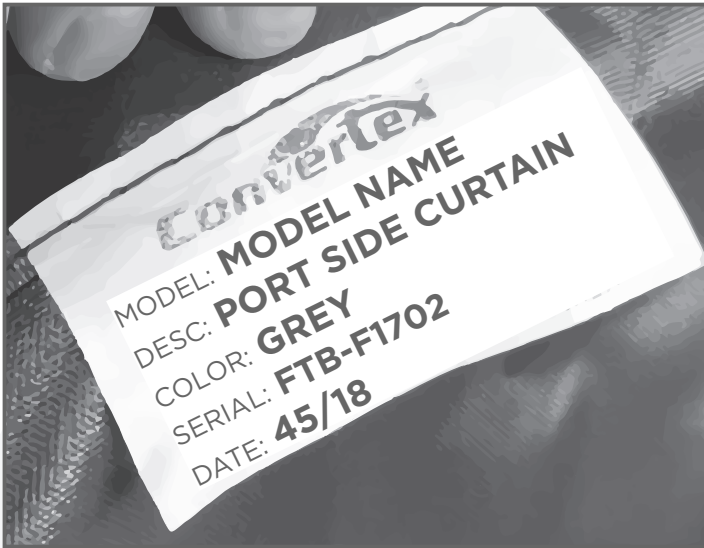


NOT SUITABLE FOR TRAILERING



PONTOON ENCLOSURES

Install Guide
WP.PE.01



STEP 1

Locate and arrange all parts and hardware required for the Enclosure installation.



STEP 2

Attach each curtain onto the assembled bimini frame(s), ensuring they are mounted in the appropriate location.

ATTENTION

Full Enclosures require both front and rear Bimini frames to be mounted and assembled.

NOTE

Each curtain location can be determined by referencing the tags stitched onto the curtains.



STEP 3

Close all zippers around the enclosure and pull the enclosure taut around the Pontoon.

Stretch the canvas around the corners and note any sections that do not properly align.

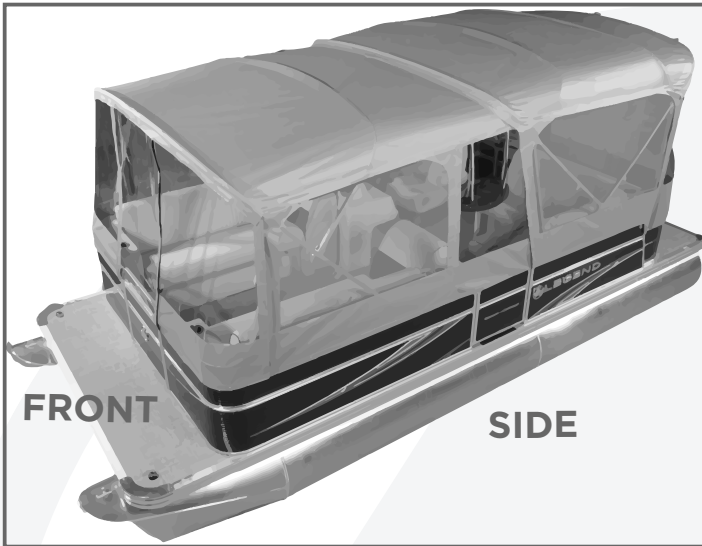
NOTE

Each canvas curtain is unique in small dimensions. Ensure each Enclosure installation follows the appropriate steps.



PONTOON ENCLOSURES

Install Guide
WP.PE.01



STEP 4

Begin installing the curtains onto the railing by following the order below:

- Front Curtains
- Rear Curtains
- Side Curtains

ATTENTION

Do not reorder the installation steps.

STEP 5

Each curtain section requires anchor points at the beginning, and end to properly set the curtain in place.

Navigate to the zipper where the curtain will snap into the railing and mark a pilot hole location onto the railing.

ATTENTION

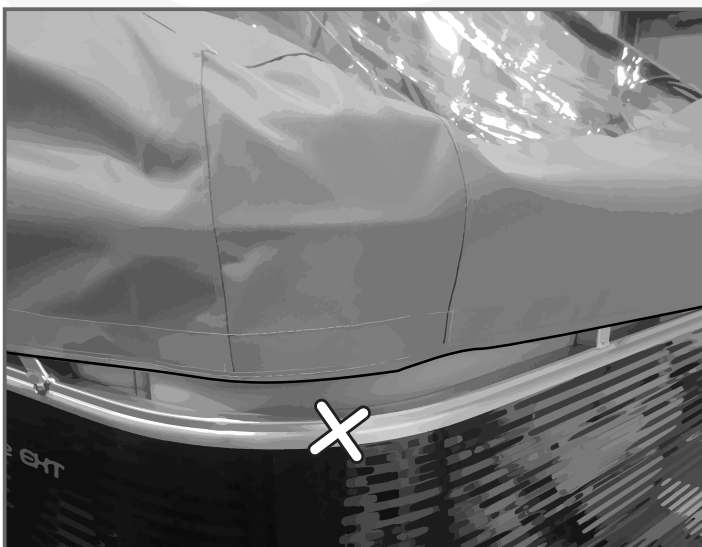
Each screw stud location should follow a straight line along the railing. Ensure the curtain can reach this straight line around the Pontoon.

STEP 6

Navigate to each corner and end where the curtain will snap into the railing and mark the pilot hole locations onto the railing, ensuring the curtain will rest straight along the Pontoon.

NOTE

Do not overstretch the curtain to achieve a straight line. Adjust the curtain accordingly until both the curtain and screw studs install properly.





PONTOON ENCLOSURES

Install Guide
WP.PE.01

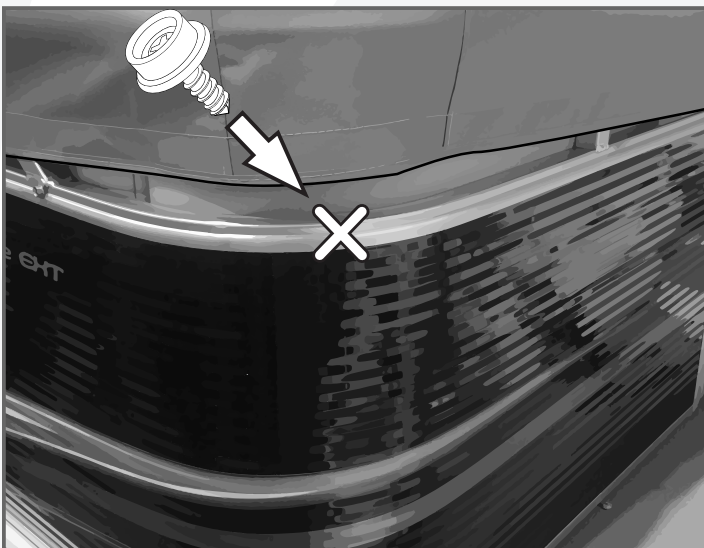
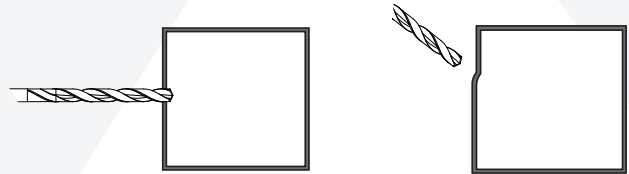


STEP 7

Using a **pontoon rail specific** drill bit, drill a pilot hole into each marked location on the railing. Do not drill through both sides.

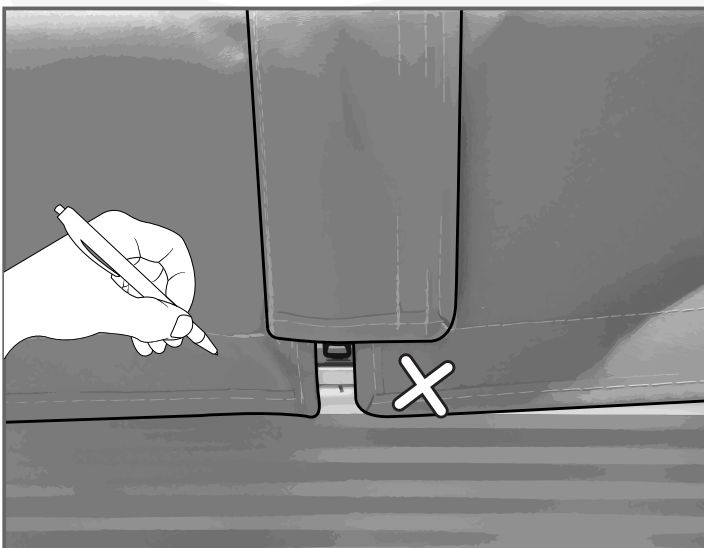
NOTE

Ensure the hole location is centered on the rail or marked in a groove, as railing profiles can vary.



STEP 8

Install a Screw Stud into the previously drilled pilot holes.



STEP 9

Using the Screw Studs as a reference, mark each snap location onto the curtain, beginning at the first screw stud from Step 5.

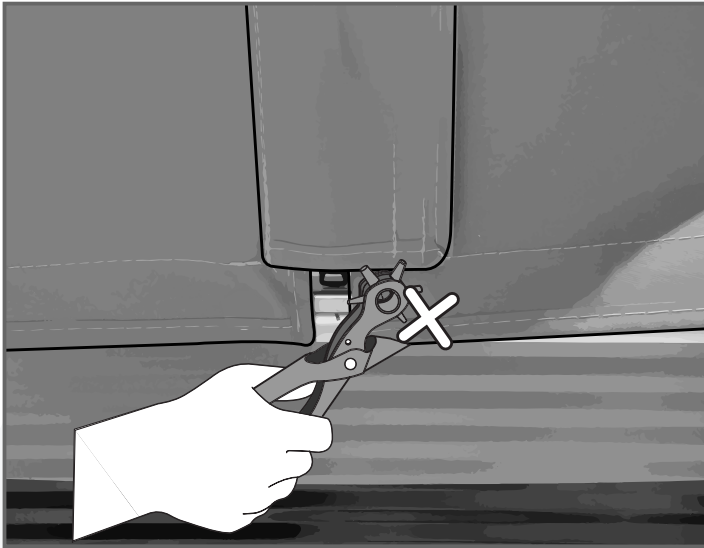
NOTE

Ensure curtain markings follow a straight line around the Pontoon.



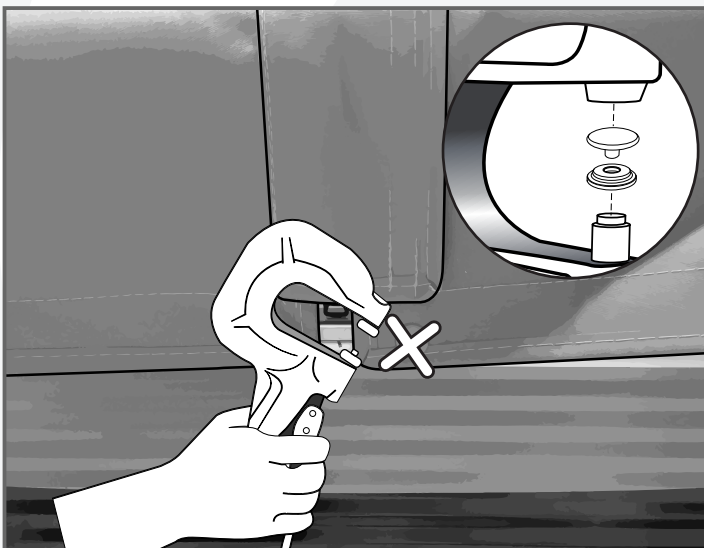
PONTOON ENCLOSURES

Install Guide
WP.PE.01



STEP 10

Using the Hole Punch tool, punch a hole into the curtain at the previously marked locations.



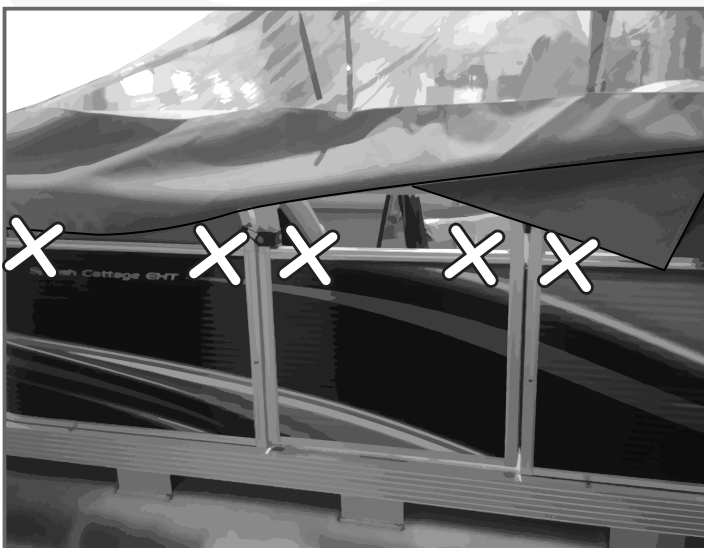
STEP 11

Using the Press & Snap Tool, install a snap into the punched hole.

Snap the curtain into the railing.

NOTE

Ensure the snap color matches the canvas color.



STEP 12

With the curtain snapped into the railing, continue installing screw studs, snaps into the railing and curtain.

Once the first curtain has been completed, repeat steps 5-12 for the remaining curtains.

NOTE

Corners require 2-3 pilot holes approximately 4"-6" apart

Snaps should be evenly spaced (18"-24") and follow the Cover and Railing consistently.



PONTOON ENCLOSURES

Install Guide
WP.PE.01



STEP 13

Once the enclosure has been installed onto the Pontoon, unzip the curtains, fold and store in the supplied Legend storage tubes.

NOTE

When storing curtains, neatly fold them prior to storage. Do not roll.